

# N×1 Multi-Mode Pump Combiner (MPC)

## Description

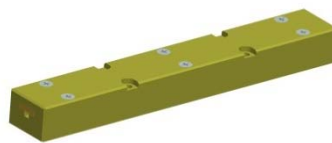
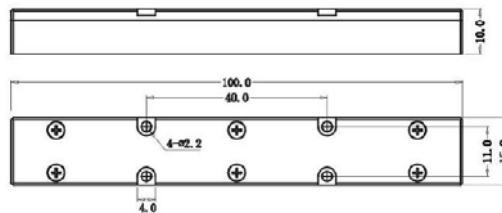
This N×1 multi-mode fiber combiner is designed for high power fiber laser application. It combines N pump lasers into one multi-mode output fiber. Fiber type can be customized.

## Key Features

- High Pump Efficiency
- Wavelength Insensitive
- Custom Configurations Available

## Mechanical Dimension

### C7: 100x15x10



**Unit: mm**

## Specifications

| Parameters/Test conditions |                                   | Min                 | Typ. | Max                 | Unit          | Note                          |    |
|----------------------------|-----------------------------------|---------------------|------|---------------------|---------------|-------------------------------|----|
| 1                          | Pump Operating Wavelength         | 800                 |      | 1000                | nm            |                               |    |
| 2                          | Pump Fiber                        | Core Diameter       |      | 105                 | μm            | Refer to fiber codes.         |    |
| 3                          |                                   | Cladding Diameter   |      | 125                 | μm            |                               |    |
| 4                          |                                   | Numerical Aperture  | 0.15 |                     | -             |                               |    |
|                            |                                   | Configuration (Nx1) |      | Pump Efficiency (%) |               | Power Handling (W, each port) |    |
| 5                          | Output Fiber                      | 200/220 0.22NA      | 7x1  |                     | >90 (Typ. 93) |                               | 25 |
|                            |                                   | 220/240 0.22NA      | 7x1  |                     | >93 (Typ. 95) |                               | 25 |
|                            |                                   | 400/440 0.22NA      | 7x1  |                     | >95 (Typ. 97) |                               | 50 |
|                            |                                   | 400/440 0.22NA      | 19x1 |                     | >90 (Typ. 93) |                               | 25 |
| 6                          | Fiber Length                      | 0.8                 |      |                     | m             | Each port                     |    |
| 7                          | Operating Environment Temperature | -5                  |      | +70                 | °C            |                               |    |
| 8                          | Operating Humidity                | 5                   |      | 95                  | %RH           |                               |    |
| 9                          | Storage Temperature               | -40                 |      | +85                 | °C            |                               |    |
| 10                         | Package                           | C7                  |      |                     | -             |                               |    |

## Ordering Information

MPC-N×1- Pump wavelength/Pump power- Pump fiber -Output fiber-Package-Fiber length

### Note :

N: Pump port number.

Pump/Output fiber: refer to fiber codes.

Package: C7