

(6+1)×1 Multi-Mode Pump Combiner (MPC)

Description

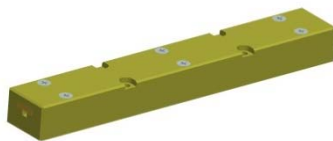
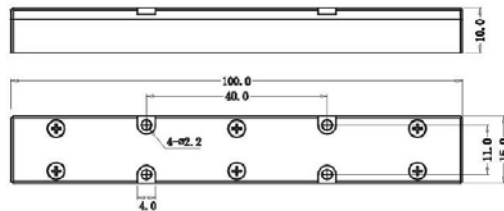
This (6+1)×1 multi-mode fiber combiner is designed for high power 2micron fiber laser application. It combines six pump lasers and one signal channel into one double cladding output fiber. Fiber type can be customized.

Key Features

- High Signal Transfer Efficiency
- High Pump Efficiency
- Wavelength Insensitive
- Custom Configurations Available

Mechanical Dimension

C7: 100x15x10



Unit: mm

Specifications

Parameters/Test conditions		Min	Typ.	Max	Unit	Note
1	Signal Operating Wavelength	1900		2100	nm	
2	Pump Operating Wavelength	700		900	nm	
3	Pump Fiber	Core Diameter		200	μm	Refer to fiber codes
4		Cladding Diameter		220	μm	
5		Numerical Aperture	0.22		-	
6	Signal Fiber	25/400 0.11/0.46NA DCF				Refer to fiber codes
7	Output Fiber	25/400 0.11/0.46NA DCF				Refer to fiber codes
8	Pump Efficiency	90	95		%	
9	Signal Insertion Loss		0.5	0.7	dB	
10	M ²			1.3	-	
11	Optical Isolation	20			dB	
12	Fiber Length	0.8			m	Each port
13	Power Handling			50	W	Each port
14	Operating Environment Temperature	-5		+70	°C	
15	Operating Humidity	5		95	%RH	Not recommend in high humidity for long time.
16	Storage Temperature	-40		+85	°C	
17	Package	C7			-	

Ordering Information

MPC-(6+1)×1-F(B)-Pump wavelength/Pump power-Signal wavelength-Pump fiber/Signal fiber-Output fiber-Package-Fiber length

Note :

F: Forward pump; B: Backward pump.

Pump/Signal/Output fiber: refer to fiber codes.

Package: C7