

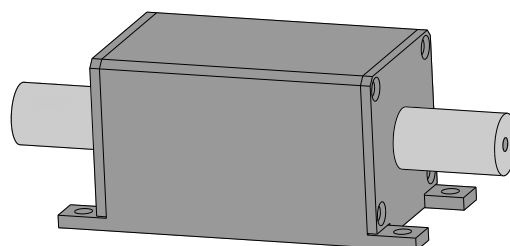
980~1064nm PM Circulator

Description

The high power PM circulator is characterized with low insertion loss, high extinction ratio, high isolation, high power handling, high return loss, excellent environmental stability and reliability. They are ideal for fiber laser and instrumentation applications.

Applications

- * Fiber Laser
- * Fiber Sensor



Specifications

Type Parameter	High Power		Low Power	
	3 Port	4 Port	3 Port	4 Port
Operating wavelength(nm)	980、1030、1064 or customized			
Bandpass(nm)	±10			
Insertion loss in bandpass at 23℃(dB)	≤1.5	≤1.8	≤1.2	≤1.5
Band of isolation(nm)	±5			
Isolation in band at 23℃(dB)	≥28			
Typical Peak isolation (dB)	≥30			
Extinction ratio (dB)	≥20			
Return loss (dB)	≥45			
Fiber type (can be customized)	SM98-PS-U25D-H、 PM10/125-SCF			
Input max. power handling (W)	10		0.3	
Dimensions (L x W x H mm)	110 x 34 x 34 (wavelength=980~1030) or 116 x 34 x 34 (wavelength=1040~1064)			
Operating temperature(℃)	-5 ~ +50			
Storage temperature(℃)	-20 ~ +70			

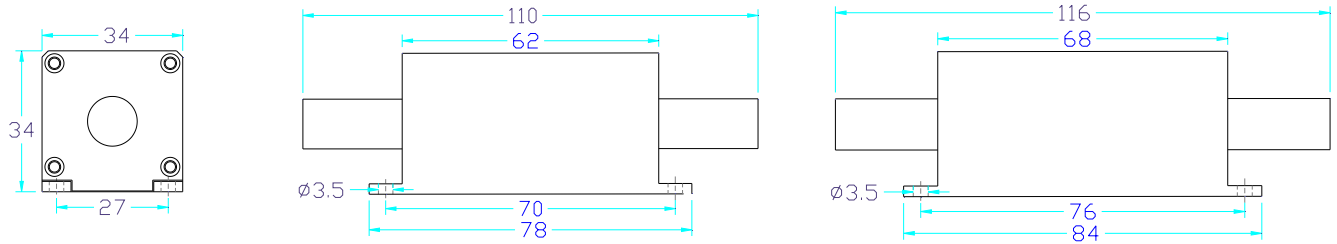
* For 3port type, input power of Port3 <0.5W

*The precondition of above specifications is extinction ratio of system ≥25dB

*The Above specifications is without connector, the connector handle power ≤0.3W

*IL is 0.50dB higher, RL is 5dB lower and ER is 3dB lower for each connector added. The default connector key is aligned to slow

Mechanical Dimensions (Unit: mm)



Ordering Information

PM CIR - X - XXXX - X - X - X(XX) - X - X*X*X - X

- Fiber length
- Package size: 110 x 34 x 34、116 x 34 x 34
- Average power handling: 300mW, 10W etc.
- Power condition: C=Continue Wave, P(10)=Pulse Peak Power(10KW),etc.
- Fiber type: SM98-PS-U25D-H, etc.
- Pigtail diameter: 0=bare fiber, 1=900μm, 2=2mm, 3=3mm
- Operating wavelength: 1030nm etc.
- Port type: 3(3port) or 4(4port).